



# Junior Programs

**High School Preparation**

CRICOS CODE: 059274J

**Primary School Preparation**



**M E G A**

A SMARTER PATHWAY

**2025**

# Welcome

Dear Students and Parents,

Starting in a school can be scary, let alone starting in a new country where everything is foreign. The people are new, the classes and surrounds are new, and the language is totally different.

At MEGA, we'll get you off to a gentle start. We will prepare you for life in an Australian school by helping you achieve the English language you need to learn at your best. You'll also be familiarised with the language that many school students and teachers use.

Our experienced Australian school teachers make lessons fun and dynamic, giving you an opportunity to participate and practice as much as possible. They teach English through school-subject related topics to help you prepare for the types of classes you'll attend in an Australian school. You'll do lots of projects in class and we also have a great sports program.

When you graduate from MEGA's school preparation course, you'll be equipped with everything you need to enter the Australian mainstream education system.

To help you keep track of your academic readiness, we conduct regular progress tests which we report to your parents, guardian, and school through monthly academic reports.

Remember, if you ever feel worried or sad, you can talk to our school counselor, who'll be ready to help you at any time.

MEGA aims to make your experience with us fun and memorable. I look forward to welcoming you into our school community!

**Henry Liu**  
Chief Executive Office  
Principal Administrator

B Com, LLB (UNSW)



# Contents

Industry-wide reputation	4
12 reasons why MEGA is a Smarter Pathway	5
MEGA High School and Primary School Pathways	6

## English Courses

Primary School Preparation (PSP)	7
High School Preparation (HSP)	8

## Pathway School Partners

Australian Performing Arts Grammar School	9
Kincoppal - Rose Bay	10
Masada College	11
Pal Buddhist School	12
Presbyterian Ladies' College Sydney	13
Reddam House	14
St Andrew's Cathedral School	15
St Augustine's College Sydney	16
St Catherine's School Sydney	17
St Maroun's College	18
St Paul's Grammar Sydney	19
St Scholastica's College	20
Stella Maris College	21
The Illawarra Grammar School	22
Tyndale Christian School Sydney	23
The Scots College	24
Georges River Grammar School	25
Athena School	26
All Saints Grammar	27
Knox Grammar School	28

Homestay and Guardianship	29
Australian Primary and High Schools Information	30
Application Process	31
Visa Application Checklist	32
Find us	33
Learn a smarter way and get in touch today	35

# We have earned industry-wide reputation for the consistently high quality education we offer.

Fully accredited by the Australian Skills Quality Authority (ASQA) and quality endorsed by the National ELT Accreditation Scheme (NEAS).



## #1 RANKED IN AUSTRALIA

School/Centre Recommendation and Country Recommendation Categories  
The Australian English Language Barometer Survey,  
2019/2020



**One of the best schools  
in Australia for overall  
international student support.**

(International Student Barometer  
survey 2018/2019, organised by  
English Australia)

[https://www.englishaustralia.com.au/  
documents/item/636](https://www.englishaustralia.com.au/documents/item/636)

# 12 reasons why MEGA is a Smarter Pathway:

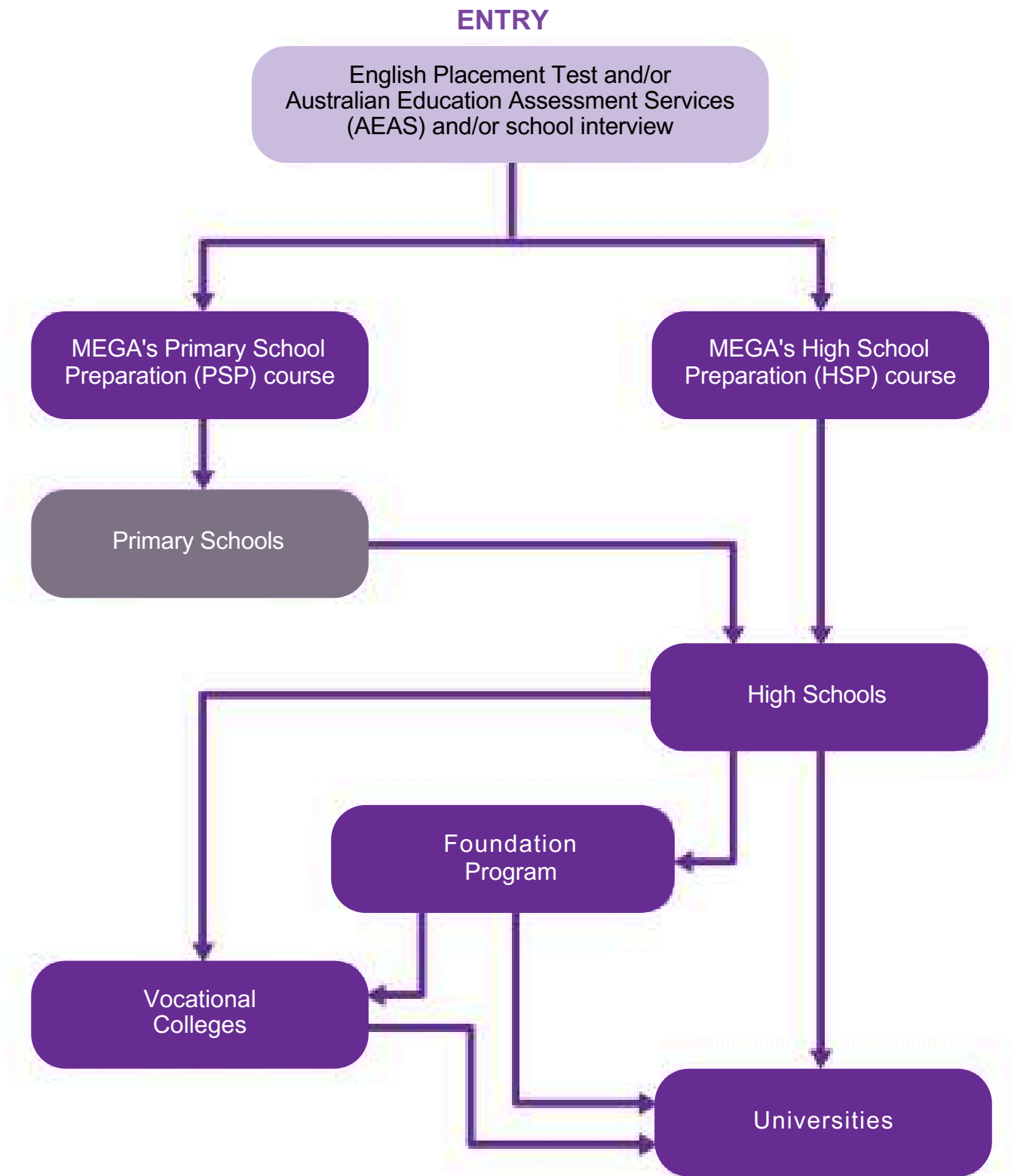
1. One of the top Australian education brands
2. Many reputable pathways to Australian primary schools and high schools
3. Excellent central location in the heart of Sydney's CBD and modern learning facilities
4. Top-class and industry approved curriculum
5. Dedicated and experienced teachers
6. Communicative and dynamic lessons
7. Small class sizes - personalised and friendly support
8. Fun excursions and sporting events organised regularly
9. Monthly tests to motivate students and regular progress reports to keep track of your learning
10. Study with students from diverse backgrounds
11. Study plan, school interview preparation and application support
12. Excellent student support services



GREAT NATIONALITY MIX

# MEGA High School and Primary School Pathways

MEGA offers direct pathways to many elite Australian private primary and high schools.





# Primary School Preparation (PSP)

## Key Facts

Course length: 2 to 36 weeks (12 weeks per level)

25 hours face-to-face teaching per week

Class size: Maximum 18 per class

Minimum age: 6 to 12 years old

Enrolment: Every Monday



### Ryan from China

Primary School Preparation gained entry to Year 2 at The Scots College

"I love those fun school activities and interactions between my son Ryan and his teacher, Liza. It helped Ryan to improve his English language skills and boost his confidence level. My son always gets up in the morning, very eager to attend school! Thank you for your effective preparation for Ryan's study at Scots College"

—Chanel (Ryan's mum)

## Course outline

MEGA's Primary School Preparation (PSP) course assists international students to attain the English level required for entry into reputable Australian Primary Schools. MEGA's Primary School Preparation program provides a safe and caring learning environment, helping each student achieve their full potential.

We use a wide variety of teaching techniques to inspire active young learners. We are committed to meeting the needs of all our students.

Our young learners will develop the knowledge and skills necessary to be able to transition successfully linguistically and culturally into all Australian primary schools.

We have small classes led by our team of experienced and energetic teachers, to support students into a smooth transition into Australian primary schools.

Our program is based on the subjects that young learners study in the Australian primary school system, with a special focus on the English language. Students will be involved in all types of exciting and fun learning activities, and their progress is carefully monitored by our teachers.

## Sample Timetable

TIME	MONDAY	TUESDAY	WEDNESDAY	THURSDAY	FRIDAY
9:00am - 10:30am	<b>Orientation and Campus Tour</b>	<b>Math:</b> Introduction to Numbers	<b>Science:</b> Exploring Weather and Seasons	<b>Social Studies:</b> Local Community and Helpers	<b>Excursion:</b> Drawing and Painting Techniques
10:30am - 10:45am	<b>Morning Break</b>				
10:45am - 12:30pm	<b>Music:</b> Singing and Rhythm Basics	<b>PE:</b> Fun with Fitness (Games and Coordination)	<b>Art:</b> Crafts with Recycled Materials	<b>Computer Skills:</b> Basic Typing and Internet Safety	<b>Language Arts:</b> Storytelling and Puppet Show
12:30pm - 1:15pm	<b>Lunch Break</b>				
1:15pm - 2:30pm	<b>Math:</b> Fun with Shapes and Patterns	<b>Science:</b> Plant Life Cycle	<b>Studies:</b> Maps and Globes	<b>Language Arts:</b> Poetry and Simple Plays	<b>Field Trip:</b> Visit to a local Park or Historical Site
2:30pm - 3:00pm	<b>Afternoon Activities:</b> Puzzle Time	<b>Afternoon Activities:</b> Team Building Games	<b>Afternoon Activities:</b> Nature Walk	<b>Afternoon Activities:</b> Reading Circle	<b>Graduation Party or Field Trip</b>

# High School Preparation (HSP)

CRICOS CODE: 059274J

## Key Facts

Course length: 2 to 60 weeks (12 weeks per level)

25 hours face-to-face teaching per week.

Class size: Average 15 / Maximum 18

Minimum age: 12 to 18 years old

Entry requirement: Placement test  
to determine English level

Enrolment: Any Monday



### Doris from China

High School Preparation  
Gained entry to Stella Maris College

"I felt very settled at MEGA. My teachers understood my challenges as an international student and they have always supported me throughout my journey. I came to Australia with little or no English and now I can read and write well. I have also integrated well into Stella Maris too. Thank you again for everything"

## Course outline

The High School Preparation (HSP) course prepares students for entry into the Australian high school system. In HSP, students can expect to learn the following topics and subject areas:

- Vocabulary and content relevant to the Australian high school curriculum
- Subject-specific content to prepare students for Years 7-12, including Mathematics, Visual Arts, ESL, History, Geography, Science, etc.
- Academic language necessary to write essays and do assignments
- Essay writing skills - complex structures, paragraphing, bibliography and referencing skills
- Grammar and useful terminology specific to high school settings
- Extra-curricular activities, including sports and cultural excursions

## Sample Timetable

TIME	MONDAY	TUESDAY	WEDNESDAY	THURSDAY	FRIDAY
9:00am - 10:30am	<b>Orientation &amp; Campus Tour</b>	<b>Mathematics:</b> Algebra Foundations	<b>Science:</b> Introduction to Experiments	<b>Social Studies:</b> Australian Culture & History	<b>Excursion:</b> Visit to a Science Museum, Local University or Historical Site
10:30am - 10:45am	<b>Morning Break</b>				
10:45am - 12:30pm	<b>Communication Skills:</b> Public Speaking & Debating	<b>Physical Education:</b> Fitness & Team Sports	<b>Digital Literacy:</b> Research & Online Safety	<b>Science:</b> Lab Work & Practical Investigations	<b>Excursion</b>
12:30pm - 1:15pm	<b>Lunch Break</b>				
1:15pm - 2:30pm	<b>Mathematics:</b> Problem Solving & Critical Thinking	<b>Science:</b> Environmental Studies & Sustainability	<b>English:</b> Writing Essays & Argumentative Texts	<b>Humanities:</b> Understanding Global Issues	<b>Project-Based Learning:</b> Group Presentations & Discussions
2:30pm - 3:00pm	<b>Afternoon Activities:</b> Study Skills & Time Management	<b>Afternoon Activities:</b> Creative Writing Workshop	<b>Afternoon Activities:</b> Guided Reading & Book Club	<b>Afternoon Activities:</b> Media Literacy & News Analysis	<b>Graduation Ceremony &amp; Farewell Or Project-Based Learning</b>



# Australian Performing Arts Grammar School

CRICOS PROVIDER CODE: 02647M



## School Information

**Established:** 2005

**Location:**  
255 Broadway  
Glebe NSW 2037  
Australia

**Religious Affiliation:** None

**Entry Years:** Years 7 - 12 years old

**Gender:** Co-education

**School fees:** \$21,836 - \$26,472 per year

### Other facts:

- No Boarding
- No International Baccalaureate (IB)
- Must be living with a family member in Australia

### English requirement

Years 7 - 8: High grade Intermediate

Years 9 - 10: High grade Upper-Intermediate

Years 11 - 12: Advanced English (ELTS 6.0)

**Website:** [www.apgs.nsw.edu.au](http://www.apgs.nsw.edu.au)

There is currently no HSC school ranking available for this school.

The Australian Performing Arts Grammar School (APGS) is a boutique inner city, co-educational secondary school established solely to train educate and inspire students with a talent in the performing and creative arts. APGS seeks to build confidence and ability in each student through an innovative school programme focusing on academic and performing arts excellence.

APGS caters to students from Year 7-12 with entry to the school based on an audition and interview. Once enrolled, students study NSW Education Standard Authority (NESA) approved curriculums leading to their HSC, along with 15 hours per week of rigorous performing arts training fostering the development of their chosen disciplines and interests covering Dance, Musical Theatre, Drama, Visual Art and Music.

The APGS performing arts program is rigorous, challenging and provides an environment for extended learning in Dance, Music, Musical Theatre, Drama and Visual Arts Timetabled over 15 days (Thursdays and Fridays), these classes are led by industry professionals in their field that delight in sharing their valuable real-world experience with our students.

Working towards showcases, performances, exhibitions and creative collaborations, the APGS Performing Arts curriculum is designed to encourage, inspire and guide students towards achieving their Individual goals.



# Kincoppal - Rose Bay

CRICOS PROVIDER CODE: 02268M



Kincoppal - Rose Bay School is part of an international network of more than 200 Sacred Heart schools in 44 countries. Throughout its long and rich history, Kincoppal - Rose Bay has continued to develop young women and men of integrity, compassion and learning.

Every child is supported and encouraged to develop to their full potential in an environment of personalised learning and academic rigour. The co-educational junior school and secondary school for girls foster spiritual, social and intellectual growth.

The Convent of the Sacred Heart, Rose Bay, was founded in 1882. Kincoppal - Rose Bay emphasises the importance of a global focus for students and an education in a diverse international community. The school currently has students from 34 different countries and is registered to accept students from overseas who meet Australian Government requirements.

Kincoppal - Rose Bay offers students the challenge of achieving personal excellence in all areas of school life, working to their personal strengths and talents. The school challenges its students to become Independent learners and equip them with the skills necessary for life-long learning. It aims to help its students develop empathy towards others and the self-confidence to believe they can transform their world. However, the school's utmost importance is the caring, supportive environment that is Kincoppal - Rose Bay. The school says - come as you are, and you will be cared for with great love.



KINCOPPAL - ROSE BAY  
SCHOOL OF THE SACRED HEART

## School Information

**Established:** 1882

**Location:**  
New South Head Road  
Rose Bay, Sydney, NSW 2029  
Australia

**Religious Affiliation:** Catholic

**Entry Years:** Kindergarten to Year 12

**Gender:** Co-educational from K - Year 6

Girls only from Years 7 to 12

**School fees:** \$49,760 - \$64,464 per year

**Boarding fees:** \$38,952 per year

### Other facts:

- Boarding available
- No International Baccalaureate (IB) available

### English requirement

Year 7: ESL Scale 3

Years 8 & 9: ESL Scale 4

Year 10: ESL Scale 4+

Year 11: ESL Scale 5

**Website:** [www.krb.nsw.edu.au](http://www.krb.nsw.edu.au)

## Higher School Certificate (HSC) School Ranking

**2023 Ranking** 49

**2024 Ranking** 68

Date supplied by NSW Education Standards  
Authority (NESA)



## School Information

**Established:** 1962

**Location:**  
9 - 15 Link Road  
St. Ives NSW 2075  
Australia

**Religious Affiliation:** Jewish

**Entry Years:** Kindergarten to Year 12

**Gender:** Co-education

**School fees:** \$39,682 - \$49,384 per year

### Other facts:

- Boarding available
- No International Baccalaureate (IB)

### English requirement

Years 7 - 9: AEAS 65+

Years 11 & 12: AEAS 75 - 80

**Website:** [www.masada.nsw.edu.au](http://www.masada.nsw.edu.au)

## Higher School Certificate (HSC) School Ranking

**2023 Ranking** 66

**2024 Ranking** 37

Date supplied by NSW Education Standards Authority (NESA)

Located in Sydney's leafy North Shore, Masada College is Australia's first Jewish International co-educational school. Students from all backgrounds are welcome to our Jewish College, which prides itself on inclusivity. Our educational mission is to raise responsible individual thinkers with a strong sense of social justice and confidence in their ability to determine their own future.

So, it's not surprising that our graduates win scholarships and awards and embark on a diverse range of career paths. We take great pride in hearing of their involvement in the community and their successes post-school.

The Masada College journey begins from age two, when toddlers join our Masada Cottage Early Learning Centre. After this, they move through to our three and four-year-old classes, then to our junior school. Finally, they graduate from our senior school as well-rounded, community-minded Australian citizens with a strong sense of their heritage and future, and a life long ability to think creatively and independently.

We pride ourselves on strong academic results in the Higher School Certificate, consistently placing in the top schools in New South Wales. However, our real success stories are not the ones published in the league tables. They are those students who exceed their own expectations thanks to the individual attention they receive here. Their enhanced performance comes down to the encouragement of their teachers, the smaller class sizes as well as the collaboration of teachers and parents.

### Our Vision Statement:

Masada College will be internationally renowned for Jewish values and educational excellence.

### Our Mission Statement:

In our students, through Jewish values and a nurturing community, Masada College engages and instils a genuine love of learning with a quest for excellence.



# Pal Buddhist School

CRICOS PROVIDER CODE: 03398D



## School Information

**Established:** 2013

**Location:**  
14 First Avenue  
Canley Vale NSW 2166  
Australia

**Religious Affiliation:** Buddhist

**Years:** 7 - 12

**Gender:** Co-education

**School fees:** \$24,000 - \$26,000 per year

### Other facts:

- No Boarding
- No International Baccalaureate (IB)

### English requirement

Years 7 - 9: IELTS 4.5

Years 10 - 12: IELTS 5.5

**Website:** [www.pal.nsw.edu.au](http://www.pal.nsw.edu.au)

There is currently no HSC school ranking available for this school.

Pal Buddhist School (PBS) is Australia's first Buddhist Secondary School. Founded in 2013, the School's mission is to provide quality education through an academic-based curriculum in an environment that fosters respect, cultural diversity and inclusivity. While they are in no way a religious school, the Buddhist philosophy underpins the way of thinking and behaviour. Pal students find joy and excitement in learning, creating and sharing their talents. Teachers and staff are passionate about their core business of education: to create in students the love of learning and the motivation to improve their life.

The curriculum is tailored to encourage academic and personal success and is complemented by a diverse choice of programmes in performing and visual arts, sport, music and experiential camps. Their vision is to provide an inspirational education where each student develops his/her personal best. The Home Room Welfare Programme is integral to students' well-being and performance. The School's values underpin their strong Buddhist philosophy of using the skills and knowledge to be generous, compassionate and selfless individuals who contribute positively to society. As a one-campus School and with less than 200 students, PBS is ready to welcome new families to its growing community.



# Presbyterian Ladies' College Sydney

CRICOS PROVIDER CODE: 02280D



## School Information

**Established:** 1888

**Location:**  
Meta St Croydon NSW 2132  
Australia

**Religious Affiliation:** Presbyterian

**Years:** Pre-Kindergarten to Year 12

**Gender:** Girls

**School fees:** \$46,140 - \$49,500 per year

**Boarding fees:** \$39,840 per year

### Other facts:

- No Boarding
- No International Baccalaureate (IB)

### English requirement

Years 7 - 10: AEAS 65+

Years 11: AEAS 70+

**Website:** [www.plc.nsw.edu.au](http://www.plc.nsw.edu.au)

## Higher School Certificate (HSC) School Ranking

**2023 Ranking** 28

**2024 Ranking** 35

Data supplied by NSW Education Standards  
Authority (NESA)

Presbyterian Ladies' College Sydney is one of Australia's oldest and most respected schools for girls. PLC Sydney is a day and boarding school for girls from Pre-Kindergarten to Year 12.

PLC Sydney offers a broad curriculum to about 1200 students from a diverse range of backgrounds. It has boarding available from Year 7. PLC Sydney produces young, confident women of integrity and purpose, who achieve outstanding academic results.

PLC Sydney provides a comprehensive education for all girls, catering to their strengths. It offers a rich academic program supported by a strong cultural, sporting and co-curricular framework. It also promotes excellence while being committed to "reaching" each student. Its Year 12 students have a strong track record in the Higher School Certificate. PLC Sydney's students are regularly included on both the Top Achievers' List and the Premier's All-Round Achievers' List

PLC Sydney provides a broad, values-based education incorporating a wide range of experiences to enable students to develop the knowledge, skills, attitudes and values, and practices necessary for success and lifelong learning. The School takes a holistic approach to delivering excellence in education and is recognised for its outstanding music, drama, speech and debating, and sport results.





# Reddam House School

CRICOS PROVIDER CODE: 02204E



## School Information

**Established:** 1993

**Location:**  
56 Mitchel Street,  
Bondi, NSW 2026  
Australia

**Religious Affiliation:** Non-denominational

**Years:** Kindergarten to Year 12

**Gender:** Co-education

**School fees:** \$49,595 - \$54,450 per year

**Other facts:**

- No Boarding
- No International Baccalaureate (IB)
- Must live with a family member in Sydney

**English requirement**

Year 7 - 12: ESL Scale 5 - 6

**Website:** [www.reddamhouse.com.au](http://www.reddamhouse.com.au)

## Higher School Certificate (HSC) School Ranking

**2023 Ranking 5**

**2024 Ranking 5**

Data supplied by NSW Education Standards  
Authority (NESA)

Reddam House is a unique, co-educational, non-denominational school for children from Kindergarten through to Year 12, founded by the renowned educator Graeme Crawford.

Reddam House offers a fresh and contemporary approach to education by re-evaluating traditional teaching methods and curriculums, and recreating a more dynamic, relevant and powerful model that is more in keeping with today's attitudes.

Reddam House sets a new standard in private education with a dedication to excellence permeating every aspect of the school. Integrating innovative, challenging and enriching academic, performing arts and sports programmes, our graduates leave with outstanding academic results, a love of learning, confidence and a firm value system that arms them to boldly embrace the challenges life throws at them in their future endeavours, more so than any other schooling environment currently available in Sydney.

The way a child is taught is the single most important decision any parent makes. At Reddam House we believe that it is an individual's total educational experience that instills the knowledge, attitudes, beliefs and values that he/she will carry with them for life.





# St Andrew's Cathedral School

CRICOS PROVIDER CODE: 02276M



St Andrew's Cathedral School is a co-educational, Kindergarten to Year 12 school that is very distinctive in many areas. It is the quintessential city school in Australia, located in two high rise buildings in the centre of Sydney's CBD. The school seeks to enrich its curriculum with city experiences, which are all on its doorstep.

The school believes that co-education is normative for life and ensure students are given every opportunity to excel academically socially and in co-curricular activities. St Andrew's Cathedral School is proudly known as a highly inclusive pastoral school, which aims at academic excellence, and has outstanding programs in music, drama and outdoor education.

The academic performance of its Year 12 graduates is consistently impressive, with Senior College students able to choose the International Baccalaureate Diploma (B) or the Higher School Certificate (HSC) as their exit credential.

Staff at St Andrew's Cathedral School are committed to continuously improving and lifting results and academic culture across all year groups by adopting best practice methodologies and utilising and adapting a wide range of technology in the classroom to ensure students are given every opportunity to be engaged and learn every day.



## School Information

**Location:**  
Sydney Square,  
Sydney NSW 2000  
Australia

**Religious Affiliation:** Anglican

**Years:** Kindergarten to Year 12

**Gender:** Co-education

**School fees:** \$33,770 - \$63,050 per year

### Other facts:

- No boarding available
- International Baccalaureate (IB) available

### English requirement

Years 7 & 8: ESL Scale 4

Years 9 & 10: ESL Scale 5

Years 11: ESL Scale 5+, AEAS 71+

**Website:** [www.sacs.nsw.edu.au](http://www.sacs.nsw.edu.au)

## Higher School Certificate (HSC) School Ranking

**2023 Ranking 84**

**2024 Ranking 136**

Data supplied by NSW Education Standards Authority (NESA)

\*Schools that also have students who have undertaken the International Baccalaureate Diploma



# St Augustine's College Sydney

CRICOS PROVIDER CODE: 03300G



St Augustine's College is regarded as one of the leading high schools for boys, boasting an enviable reputation for academic excellence and success. Founded in 1956, the College has approximately 1,200 students and limits the international student enrolments to a maximum of 70 international boys within Years 9-12. We are committed to the academic, spiritual physical, social and emotional development of the whole student.

St Augustine's College is an independent school located on the prestigious Northern Beaches of Sydney; an esteemed and highly sought after residential area offering clean, safe neighbourhoods which many professional people and their families call home.

At St Augustine's College, over 90% of its Year 12 students receive offers from the university of their choice each year. The College has an excellent record of academic achievement in the High School Certificate (HSC) and was ranked within the top 100 schools in NSW in 2016.



ST AUGUSTINE'S  
COLLEGE - SYDNEY

## School Information

### Location:

Federal Parade.  
Brookvale NSW 2100  
Australia

**Religious Affiliation:** Roman Catholic

**Entry Years:** Years 5 - 12

**Gender:** Boys

### School fees:

Years 7 - 12: \$40,000 per year

### Other facts:

- No boarding available
- International Baccalaureate available (IB)

### English requirement

Years 7 & 8: IELTS 4.5, AEAS 65

Years 9 & 10: IELTS 5.0, AEAS 75

Years 11 & 12: IELTS 5.5, AEAS 80

**Website:** [www.saintaug.nsw.edu.au](http://www.saintaug.nsw.edu.au)

## Higher School Certificate (HSC) School Ranking

**2023 Ranking** 94

**2024 Ranking** 62

Data supplied by NSW Education Standards  
Authority (NESA)



# St Catherine's School Sydney

CRICOS PROVIDER CODE: 02322K



## School Information

**Established:** 1856

**Location:**  
26 Albion Street,  
Waverley NSW 2024  
Australia

**Religious Affiliation:** Anglican

**Entry Years:** Kindergarten to Year 12

**Years:** Kindergarten to Year 12

**Gender:** Girls

**School fees:** \$41,672 - \$44,606 per year

**Boarding fees:** \$31,380 per year

**Other facts:**

- Boarding available
- No International Baccalaureate (IB)

**English requirement**

Years 7 - 9: AEAS 61+ or Upper-Intermediate

Year 10: AEAS 71+ or Pre-Advanced

Gifted & talented program available

**Website:** [www.stcatherines.nsw.edu.au](http://www.stcatherines.nsw.edu.au)

## Higher School Certificate (HSC) School Ranking

**2023 Ranking 21**

**2024 Ranking 24**

Data supplied by NSW Education Standards Authority (NESA)





St Maroun's College is an independent co-educational school in the Maronite Catholic tradition and is open to all students, including those from overseas, from Kindergarten to Year 12 with added Preschool facilities on site. The peaceful surroundings provide a positive environment where students are nurtured to achieve personal excellence in their education and to meet their full potential.

Located in the inner-west of Sydney, the College celebrates the richness of their multicultural student population and shares with their families, the value of a holistic education that is facilitated by the dedicated team of teachers at St Maroun's College.

The teaching and support staff at St Maroun's College support every student attending the College in achieving in their areas of strength and developing life and social skills that will equip them for life after school. St Maroun's is a unique school providing a Catholic education within the Maronite tradition to students from diverse cultural and linguistic backgrounds. The college takes great care in preserving the culture of reference for each child by celebrating their differences and sharing in the commonalities.

The College spirit is underpinned by the ethos and rich heritage of the Maronite Sisters of the Holy Family, which is to respect the dignity, worth and the rights of the individual. Building on this philosophy, St Maroun's is committed to providing a wide range of opportunities whereby students can develop their spiritual, emotional, physical and intellectual maturity so that they can make a positive contribution to Australian society



## School Information

**Established:** 1970

**Location:**  
194 Waldell Road,  
Dulwich Hill NSW 2203  
Australia

**Religious Affiliation:** Catholic

**Entry Years:** Kindergarten to Year 12

**Years:** Kindergarten to Year 12

**Gender:** Co-education

**School fees:** \$21,000 - \$25,934 per year

**Other facts:**

- No boarding available
- No International Baccalaureate (IB) available

### English requirement

Years 7 - 9: ESL Scale 4 or Intermediate

Years 10 - 11: ESL Scale 5 or

Upper-Intermediate

**Website:** [www.stmarouns.nsw.edu.au](http://www.stmarouns.nsw.edu.au)

## Higher School Certificate (HSC) School Ranking

**2023 Ranking** 189

**2024 Ranking** 170

Data supplied by NSW Education Standards Authority (NESA)



# St Paul's Grammar Sydney

CRICOS PROVIDER CODE: 02267A



## School Information

**Established:** 1983

**Location:**  
52 Taylor Road  
Cranebrook NSW 2749  
Australia

**Religious Affiliation:** Non-denominational Christian School

**Entry Years:** Pre-Kindergarten to Year 12

**Gender:** Co-educational

**School fees:**

- Kindergarten to Year 6 - \$38,300 per year
- Year 7 to Year 12 - \$45,600 per year

**Other facts:**

- No Boarding
- International Baccalaureate (IB)

**English requirement**

Year 7 and Year 8:	IELTS 4.5, AEAS 65
Year 9 and Year 10:	IELTS 5.0, AEAS 75
Year 11 and Year 12:	IELTS 5.5, AEAS 80

**Website:** [www.stpauls.nsw.edu.au](http://www.stpauls.nsw.edu.au)

## Higher School Certificate (HSC) School Ranking

Not Available

St Paul's Grammar School is an independent, co-educational, non-denominational Christian day school situated in Cranebrook, near Penrith in Western Sydney. Established in 1983, the school caters to students from Pre-Kindergarten through Year 12, with an enrolment of approximately 860 students.

From a foundation of caring inquiry-based learning in Pre-Kindergarten, extending right through to their senior years, St Paul's students share in a school culture that is both proud and strong - as much about becoming well-rounded, responsible world citizens as it is about enjoying their journey.

The school offers a dual curriculum, providing both the New South Wales Education Standards Authority (NESA) curriculum and the International Baccalaureate (IB) programmes. Notably, St Paul's was the first school in NSW to offer the internationally-recognised International Baccalaureate programmes are taught continuously at Primary, Middle and Senior levels, in conjunction with NESA requirements, placing our students in a global framework, with a local focus.

The campus spans 28 hectares (70 acres) of semi-rural land, featuring cultivated native gardens and bushland. Facilities include a multi-purpose indoor centre, performing arts block with music and drama studios, science and technology labs, a school farm, and extensive sports fields.

St Paul's emphasizes a Christ-centred community, aiming to empower students to be discerning individuals of integrity, who are called to serve with respect and compassion.



# St Scholastica's College

CRICOS PROVIDER CODE: 03337F



## School Information

**Established:** 1878

**Location:**  
4 Avenue Road,  
Glebe, NSW 2037  
Australia

**Religious Affiliation:** Catholic

**Entry Years:** Years 7 - 12

**Gender:** Girls

**School fees:** \$31,460 per year

**Boarding fees:** \$25,560 per year

**Other facts:**

- Boarding available
- No International Baccalaureate (IB) available

**English requirement**

Year 7 - 11: ESL Scale 4 - 5

**Website:** [www.stscholastica.nsw.edu.au](http://www.stscholastica.nsw.edu.au)

## Higher School Certificate (HSC) School Ranking

**2023 Ranking** 117

**2024 Ranking** 124

Data supplied by NSW Education Standards  
Authority (NESA)

Welcome to St Scholastica's College, an independent school for girls In Years 7-12. Our day and boarding school-affectionately known as 'Schols' has been educating young women for 140 years, instilling values which have their foundations in both the Catholic faith and the inspiration of the parable of the Good Samaritan in the Gospel (Luke 10: 25-37).

We proudly describe our College as a 'school like no other because of the balance between academic achievement, creativity and excellence in the Arts and sports, in an environment that gives emphasis to personal growth, nurturing pastoral care, inclusion, diversity and respect. Schols has a rich history of educating international students.

A Schols education is holistic and strongly grounded in academic and personal growth, developing young women who are wise, resilient, just, compassionate, balanced, and who are well equipped for an ever-changing world.

It is a pleasure and a privilege to contribute to the development of young women who become life-long learners, empowered to engage confidently and capably in the world and who contribute positively to the lives of others.







## School Information

**Established:** 1931

**Location:**  
52 Eurobin Avenue  
Manly, NSW 2095  
Australia

**Religious Affiliation:** Catholic

**Entry Years:** Years 7 - 12

**Gender:** Girls

**School fees:** \$45,400 - \$49,500 per year

**Other facts:**

- No boarding available
- No International Baccalaureate (IB) available

**English requirement**

Years 7 - 11: ESL Scale 4

Year 11: ESL Scale 5 or AEAS 65

**Website:** [www.stellamaris.nsw.edu.au](http://www.stellamaris.nsw.edu.au)

## Higher School Certificate (HSC) School Ranking

**2023 Ranking** 61

**2024 Ranking** 96

Data supplied by NSW Education Standards  
Authority (NESA)

A school of Good Samaritan education, Stella Maris College is an independent Catholic girls' secondary school established in 1931 in the Benedictine tradition. Located at Manly on Sydney's Northern Beaches, Stella Maris College has an established reputation of having an innovative, flexible and diverse curriculum.

The college prides itself on the care and development of young women who through living the Benedictine values will contribute to making a significant and positive difference to the world. These values include compassion, justice and peace, community, balance, hospitality and wise stewardship.

Stella Maris College seeks to create a community where compassion and justice are at the heart of everything it undertakes; where learning is ongoing and valued; where students and staff work with 21st-century technology; where individuals are able to develop a balance in their lives; in an environment welcoming to all; and a place where care for the earth provides a sustainable aspect of existence.

Stella is committed to offering best practice teaching and learning grounded in the latest evidence-based research. Students will be expected to have a positive attitude to learning and be an active agent of their academic growth. A differentiated curriculum means that each girl can work towards academic goals that see her achieve her personal best. Stella's HSC results are always exciting and highly gratifying. Students often achieve beyond their expectations and the school enjoys their success as much as they do!



# The Illawarra Grammar School

CRICOS PROVIDER CODE: 02300E



The Illawarra Grammar School (TIGS) is an independent co-educational Anglican day school located on the eastern coast of New South Wales in the City of Wollongong, approximately 70km south of Sydney.

TIGS is an International Baccalaureate (B) World School offering the Primary Years Programme (PYP) in our Junior School and the Middle Years Programme (MYP) in Year 7 to Year 10. In Years 11 and 12, students can choose either the IB Diploma Programme or the NSW Higher School Certificate Course.

The school is renowned as a dynamic educational centre that aims to encourage each student to pursue the highest level of academic excellence, personal achievement and fulfilment of which they are capable. Graduates from TIGS have great success in gaining entry to university and tertiary courses every year.

International students at TIGS are encouraged to become part of a vibrant student body and gain access to and understanding of Australia, its culture and people, whilst living in a friendly, caring homestay environment.



## School Information

**Established:** 1959

**Location:**  
10-12 Western Avenue  
Mangerton NSW 2500  
Australia

**Religious Affiliation:** Anglican

**Entry Years:** Kindergarten to Year 12

**Gender:** Co-education

**School fees:** \$34,390 - \$37,290 per year

### Other facts:

- No boarding available
- No International Baccalaureate (IB) available

### English requirement

- Students wishing to enter Years 7 - 8 must have a minimum AEAS score of 61 or more
- Students wishing to enter Years 9 must have a minimum AEAS score of 71
- Students wishing to enter Year 10 must have a minimum AEAS score 71

**Website:** [www.tigs.nsw.edu.au](http://www.tigs.nsw.edu.au)

## Higher School Certificate (HSC) School Ranking

**2023 Ranking** 164

**2024 Ranking** 74

Data supplied by NSW Education Standards Authority (NESA)



# Tyndale Christian School Sydney

CRICOS PROVIDER CODE: 02273C



## School Information

**Established:** 1966

**Location:**

58 Douglas Road  
Blacktown NSW 2148  
Australia

**Religious Affiliation:** Protestant

**Entry Years:** Pre-Kindergarten to Year 12

**Gender:** Co-education

**School fees:**

- Primary (K to Year 6) - \$22,330 per year
- Secondary (Year 7 to Year 12) - from \$25,610 to \$28,980 per year

**Other facts:**

- No boarding

**English requirement**

- Year 3 to Year 10 - Students are required to complete a minimum of one term of ELICOS (English Language Intensive course for Overseas Students) at MEGA prior to commencing their studies at Tyndale.
- Secondary Year 11 - IELTS 5.0 or equivalent.

**Exemptions:**

Students who can demonstrate attendance of two or more years at an English speaking school may be exempt from these requirements.

**Website:** [www.tyndale.edu.au](http://www.tyndale.edu.au)

## Higher School Certificate (HSC) School Ranking

Not Available

Tyndale Christian School, named after William Tyndale, a 16th-century scholar known for translating the Bible into English, the school emphasises a Christ-centred education. Its motto, "Serve the Lord with Gladness," reflects its commitment to nurturing students in faith and service.

Tyndale Christian School is an independent, co-educational institution offering education from early learning through Year 12. Established in 1966, the school was founded by the Association for Christian Education of Blacktown Ltd., a group of Protestant Christians aiming to provide education grounded in biblical principles.

The Tyndale community has grown from an original Reformed Church base to embrace Christian parents from a wide variety of Christian denominations and many cultural backgrounds. The families and their students enrolled at Tyndale are comprised of 65 different ethnic backgrounds and represent around 100 Christian Churches.

The school has grown to accommodate over 980 students from diverse cultural backgrounds, representing approximately 100 Christian churches. The campus spans 5.2 hectares and includes facilities such as a Trade Training Centre, an 80-place Early Learning Centre, and a Senior Studies Centre.



# The Scots College

CRICOS PROVIDER CODE: 02287G



## Raising fine men since 1893

The Scots College is one of Australia's oldest and most reputable day and boarding schools for boys. The education philosophy of the college focuses on adventure and learning, with innovative programs designed to instil stature and substance in boys that will see them grow into fine young men.

"Our challenge is to ensure that the Scots experience fosters leadership, character and spirit to define the brave heart and bold mind of every fine Scot boy," says principal Dr Ian PM Lambert. The curriculum is designed to engage boys in active learning. The Scots College employs development-stage-relevant models of learning to make every day in a Scot boy's life part of an exciting adventure.

At the Scots College, the academic program is supported by outdoor education, leadership, co-curricular and sporting programs designed to challenge and inspire boys.

The education philosophy of the college emphasises that adventure is core to a boy's experience in his early Senior School years. There is a focus on collaborative learning and boys become increasingly aware of what it means to be a global citizen, to be respectful of different cultures and to take responsibility in one's community.



**The Scots College**  
Sydney Australia

## School Information

**Established:** 1893

**Location:**  
Victoria Road,  
Bellevue Hill, NSW 2023  
Australia

**Religious Affiliation:** Presbyterian

**Entry Years:** Kindergarten to Year 12

**Gender:** Boys

**School fees:** \$27,240 - \$46,920

**Boarding fee:** \$34,660

### Other facts:

- No boarding available
- No International Baccalaureate (IB) available

### English requirement

Years 7 - 11: AEAS Stanine 7 or higher  
conditional

Years 7 - 9: ESL 4 or Intermediate level

Year 10 - 11: ESL 5 or Upper-Intermediate  
level

**Website:** [www.tsc.nsw.edu.au](http://www.tsc.nsw.edu.au)

## Higher School Certificate (HSC) School Ranking

**2023 Ranking 51**

**2024 Ranking 41**

Data supplied by NSW Education Standards  
Authority (NESA)





# Georges River Grammar School

CRICOS PROVIDER CODE: 00382C



Georges River Grammar has grown from its humble beginnings as St Paul's Choir School over 30 years ago. Its comparative youth as a school has many benefits, which parents and students enjoy. It is a school that ensures that every child is known personally and valued.

It provides individualised programs to cater for its multi-cultural and academically diverse students and ensure that each student can achieve their goals, whatever those goals may be. The students of GRG are at the centre of everything they do, and the committed and passionate staff at GRG do everything in their power to make sure that each child is extended, challenged and supported in their learning journey.

GRG recognises that the physical learning environment also has a strong influence on student learning. GRG is a well-resourced school, with modern facilities, that allows it to offer varied opportunities to its students. Their campus is an exciting place to learn, and their manicured gardens and grounds play an influential role in ensuring that GRG students come to school each day ready to learn and can be proud of their school.

GRG continually strives to:

- develop its students into critical and creative thinkers
- challenge students to develop their sense of inquiry and skills in problem solving
- ensure that student wellbeing is its priority and provide an effective Student Wellbeing program, using the principles of positive psychology
- embrace the use of technology in the classroom and educate students about the need to be responsible digital citizens
- be an employer of choice where highly trained and experienced staff can develop professionally
- promote open and honest communication between the School and the home; and,
- strengthen students understanding of servant leadership through current and new social justice initiatives in partnership with various organisations and local Indigenous communities.



## School Information

**Established:** 1884

**Location:**  
53 Georges Cres, Georges  
Hall, NSW 2198  
Australia

**Religious Affiliation:** Anglican

**Entry Years:** Kindergarten to Year 12

**Gender:** Co-educational

**School fees:** \$17,350 - \$27,900 per year

**English requirement:**

Years 9, 10 and 11: Upper-Intermediate  
(AEAS 61 - 70)

Years 7 and 8: Intermediate (AEAS 46 - 60)

**Website:** [www.grg.nsw.edu.au](http://www.grg.nsw.edu.au)

## Higher School Certificate (HSC) School Ranking

**2023 Ranking 98**

**2024 Ranking 199**

Data supplied by NSW Education Standards  
Authority (NESA)



# Athena School

CRICOS Provider Code: 02266B



## School Information

**Established:** 1986

**Location:**  
28 Oxford street  
Newtown, NSW 2042  
Australia

Athena School is a unique independent school located in Newtown, Sydney, offering a personalised and supportive learning environment for students from Kindergarten to Year 10. Established with a focus on fostering a love for learning, Athena School provides an alternative approach to education that emphasises student engagement, hands-on learning, and individual progress. The school is known for its close-knit community, where students are encouraged to develop confidence, creativity, and critical thinking skills.

The curriculum at Athena School follows the NSW Education Standards Authority (NESA) guidelines, with a strong emphasis on literacy, numeracy, and practical learning experiences. Small class sizes allow teachers to provide tailored instruction, ensuring that students grasp concepts fully before moving forward. The school's teaching philosophy is built around understanding, application, and mastery, helping students develop a solid academic foundation while fostering a genuine enthusiasm for learning.

Beyond academics, Athena School offers a range of co-curricular activities, including art, music, drama, and sports. The school places a strong emphasis on personal development, encouraging students to set goals, take responsibility for their learning, and develop leadership skills. Community involvement is also a key aspect of student life, with various programs designed to foster teamwork, social responsibility, and environmental awareness.

Athena School's welcoming and inclusive environment provides students with the support they need to thrive both academically and personally. With a commitment to holistic education, the school nurtures each child's unique strengths and talents, preparing them for future success in further education and beyond.

**Religious Affiliation:** Christian

**Entry Years:** Kindergarten to Year 10

**Gender:** Co-educational

**Primary school:** \$20,796 per year

**High school:** \$23,236 per year

**English requirement:**

- Years 7 - 10: IELTS 5

**Website:** [www.athena.nsw.edu.au](http://www.athena.nsw.edu.au)

There is currently no HSC school ranking available for this school.





# All Saints Grammar

CRICOS Provider Code: 03285B



All Saints Grammar School is a leading independent co-educational school in South Belmore, Sydney, founded in 1990 by the Greek Orthodox Archdiocese of Australia. The school offers a nurturing learning environment that blends academic excellence with strong cultural and spiritual values. With a focus on developing well-rounded students, All Saints Grammar provides an education that encourages critical thinking, leadership, and a commitment to community service.

The school caters to students from Pre-Kindergarten to Year 12, following the NSW curriculum with a strong emphasis on literacy, numeracy, and inquiry-based learning. All Saints Grammar is known for its supportive and inclusive approach to education, helping students reach their full potential through small class sizes and personalised learning experiences. In senior years, students are guided through the Higher School Certificate (HSC) with dedicated academic support and career planning programs.

Beyond the classroom, All Saints Grammar offers a rich co-curricular program that includes sports, performing arts, and cultural activities. The school has a strong connection to its Greek heritage, incorporating Greek language studies, cultural traditions, and Orthodox Christian values into daily school life. Students have opportunities to participate in local and international cultural events, fostering a sense of global citizenship and pride in their heritage.

The school's modern campus features state-of-the-art facilities, including well-equipped classrooms, science laboratories, and sporting grounds. All Saints Grammar prides itself on its close-knit community, where students, teachers, and families work together to create a supportive and inspiring educational environment. With a strong reputation for academic achievement, character development, and cultural enrichment, All Saints Grammar continues to shape confident and compassionate young leaders.



## All Saints Grammar

### School Information

**Established:** 1990

**Location:**  
231 Forsyth Street  
South Belmore, NSW 2192  
Australia

**Religious Affiliation:** Greek Orthodox

**Entry Years:** Kindergarten to Year 12

**Gender:** Co-educational

**School fees:** \$36,080 - \$39,141

**Other facts:**

- No boarding available
- No International Baccalaureate (IB) available

**English requirement**

- For entry to year 7 - 11 : IELTS 5 or 6

**Website:** [www.allsaints.nsw.edu.au](http://www.allsaints.nsw.edu.au)

### Higher School Certificate (HSC) School Ranking

**2023 Ranking** 86

**2022 Ranking** 91

# Knox Grammar School

CRICOS Provider Code: 00399E



Knox Grammar School is a prestigious independent Uniting Church school for boys, located in Wahroonga on Sydney's North Shore. Founded in 1924, Knox has built a strong reputation for academic excellence, outstanding co-curricular programs, and a commitment to developing well-rounded young men. With a motto of Virile Agitur ("The manly thing is being done") the school fosters values of integrity, resilience, and leadership among its students.

The school offers a dynamic and innovative curriculum from Kindergarten to Year 12, with both the NSW Higher School Certificate (HSC) and International Baccalaureate (IB) options for senior students. Knox is well known for its cutting-edge teaching methods, extensive support programs, and a strong focus on student well-being. The Knox Total Fitness program is a unique initiative that promotes mental, physical, and emotional development, ensuring students are equipped for success in all areas of life.

Beyond academics, Knox has a thriving co-curricular program that includes sports, music, drama, and outdoor education. The school is particularly renowned for its excellence in rugby, swimming, and athletics, regularly competing at high levels in independent school competitions. Knox's music and performing arts programs are also highly regarded, with opportunities for students to participate in orchestras, choirs, and theatrical productions.

Set on a spacious, well-equipped campus, Knox boasts state-of-the-art facilities, including modern classrooms, advanced science and technology labs, and world-class sporting venues. The school also has a strong sense of community, with a dedicated Old Boys' network and a commitment to service and leadership. With a long tradition of producing exceptional graduates, Knox Grammar School continues to be a leading institution in Australian education.



## School Information

**Established:** 1924

**Location:**  
2 Borambil Street  
Wahroonga, NSW 2076  
Australia

**Religious Affiliation:** Christian

**Entry Years:** Kindergarten to Year 12

**Gender:** Boys

**School fees:** \$50,070 - \$52,920 per year

**Boarding Fee:** \$39,210 per year

**Other facts:**

- No boarding available
- No International Baccalaureate (IB) available

**English Requirement:**

- For entry to year 7 - AEAS 70
- For entry to year 8 - 10 - AEAS 75

**Website:** [www.knox.nsw.edu.au](http://www.knox.nsw.edu.au)

## Higher School Certificate (HSC) School Ranking

**2023 Ranking** 18

---

**2022 Ranking** 11

---



# Homestay and Guardianship



**MEGA works with Study Vision and Australian Homestay Network (AHN) for the provision of homestay services.**

The Department of Home Affairs requires international students under the age of 18 to arrange accommodation and guardianship while staying in Australia.

MEGA believes that choosing a homestay as accommodation when coming to a new country, ensures a more successful and rewarding experience for International students. Hosts are carefully selected to ensure students are placed in environments that are not only safe and comfortable, but also warm and welcoming. The students will enjoy a supportive, friendly home environment whilst adjusting to the Australian culture and community they will be living in.

**MEGA works with Study Vision and ISA Student Advocates for the provision of guardianship services.**



**Guardian  
& Welfare  
SERVICES**

## Role of the guardian

A guardian is an independent person who can communicate directly with the parents, who is a representative of the parents in Australia and provides professional care and support services to the student.

Example of guardian services include but are not limited to the following:

- Visiting students at their accommodation and communicating with homestay parents
- Assisting students to contact their parents after they arrive in Australia
- Explaining important safety and security information directly to the student
- Meeting students and teachers in school
- Obtaining students' academic reports and providing feedback to parents.

# Australian Primary and High School Information

MEGA can assist you in applying for a place at the following schools:

Private Schools	Religious Affiliation	Gender	Location	English Requirement	Test or Interview after MEGA's Course	Boarding fee* (approximate per annum)	Tuition fee* for International Students (approximate per annum)	2024 HSC Ranking
<b>Australian Performing Arts Grammar School</b>	Non-denominational	Co-Educational	Glebe	Years 7 - 11: High grade Intermediate Years 9 - 10: High grade Upper-Intermediate Years 11 - 12: Advanced English (IELTS 6.0)	Interview & Reports & Audition	No	\$21,836 - \$26,472	N/A
<b>Kincoppal Rose Bay</b>	Catholic	Co-Educational (3-6 year old) Girls (Years 7-12)	Rose Bay	Year 7 - 9: ESL Scale 3 Year 10: ESL Scale 4+ Year 8 - 9: ESL Scale 4 Year 11: ESL Scale 5	Test	\$38,952	\$49,760 - \$64,464	68
<b>Masada College</b>	Jewish	Co-Educational	St. Ives	Years 7 - 9: AEAS 65+ Years 11 - 12: AEAS 75-80	Interview & Reports	No	\$39,682 - \$49,384	37
<b>Pal Buddhist School</b>	Buddhist	Co-Educational	Canley Vale	Years 7 - 9: IELTS 4.5 Years 10 - 12: IELTS 5.5	Interview & Reports & Test	No	\$24,000 - \$26,000	N/A
<b>Presbyterian Ladies College Sydney</b>	Presbyterian	Girls	Croydon	Years 7 - 12: ESL Scale 5-6	Test	\$39,840	\$46,140 - \$49,500	35
<b>Reddam House</b>	Non-denominational	Co-Educational	Bondi	Years 7 - 12: ESL Scale 5-6	Interview & Reports	No	\$49,595 - \$54,450	5
<b>St Andrew's Cathedral School</b>	Anglican	Co-Educational	Town Hall	Years 7 - 8: ESL Scale 4 Years 9 & 10: ESL Scale 5 Year 11: ESL Scale 5+, AEAS 71+	Test	No	\$33,770 - \$63,330	136
<b>St Augustine's College Sydney</b>	Roman Catholic	Boys	Brookvale	Years 7 - 8: IELTS 4.5. AEAS 65 Years 9 - 10: IELTS 5.0. AEAS 75 Years 11 - 12: IELTS 5.5. AEAS 80	Interview & Reports	No	\$40,000	62
<b>St Catherine's School Sydney</b>	Anglican	Girls	Waverley	Years 7 - 9: AEAS 61+ or Upper-Intermediate Year 10: AEAS 71+ or Pre-Advanced	Interview & Reports	\$31,380	\$41,672 - \$44,606	24
<b>St Maroun's College</b>	Catholic	Co-Educational	Dulwich Hill	Years 7 - 9: ESL Scale 4 or Intermediate Years 10 - 11: ESL Scale 5 or Upper-Intermediate	Interview & Reports	No	\$21,000 - \$25,934	170
<b>St Scholastica's College</b>	Catholic	Girls	Glebe	Years 7 - 11: ESL Scale 4-5	Test	\$30,510	\$37,210	124
<b>Stella Maris College</b>	Catholic	Girls	Manly	Years 7 - 11: ESL Scale 4 Year 11: ESL Scale 5 or AEAS 65	Interview & Reports	No	\$45,400 - \$49,500	96
<b>The Illawarra Grammar School (TIGS)</b>	Christian	Co-Educational	Mangerton	Years 7 & 8 - AEAS >61 Year 9 - AEAS >71 Year 10 - AEAS >81	Interview & Reports	No	\$34,390 - \$37,290	74
<b>The Scots College</b>	Presbyterian	Boys	Bellevue Hill	Year 7 - 11 AEAS Stanine 7- conditional Year 7 - 9: ESL Scale 4+ Years 10 - 11: Scale 5+	Interview & Reports	\$34,660	\$27,240 - \$46,920	41
<b>Georges River Grammar School</b>	Anglican	Co-Educational	Georges Hall	Year 9, 10 and 11: Upper-Intermediate (AEAS 61 - 70)	Interview & Reports	No	\$17,350 - \$27,900	199
<b>St. Paul's Grammar Sydney</b>	Non-denominational	Co-Educational	Cranebrook	Year 7 and Year 8: IELTS 4.5 Year 9 and Year 10: IELTS 5.0 Year 11 and Year 12: IELTS 5.5 AEAS 65 AEAS 75 AEAS 80	Interview & Reports	No	\$38,300 - \$45,600	N/A
<b>Tyndale Christian School Sydney</b>	Protestant	Co-Educational	Blacktown	Year 3 to Year 10 - Students are required to complete a minimum of one term of ELICOS (English Language Intensive course for Overseas Students) at MEGA prior to commencing their studies at Tyndale. Secondary Year 11 - IELTS 5.0 or equivalent.	Interview & Reports	No	\$22,330 - \$28,980	N/A

\* Please note that school tuition fees and boarding fees may change subject to individual school's policies.

# Application Process for Study at MEGA and/or High Schools/Primary Schools

## Application Process

## Checklist

1. English Placement Test and/or AEAS test

• • •

☐ Test date: \_\_\_\_/\_\_\_\_/\_\_\_\_

2. Interview & assess for eligibility

• • •

☐ Interview date: \_\_\_\_/\_\_\_\_/\_\_\_\_

3. Recommend a school and study plan

• • •

☐ School Name: \_\_\_\_\_

4. Check availability with the school

• • •

☐ Accepted for Year: \_\_\_\_ in \_\_\_\_

5. Submit application forms to MEGA and school

• • •

Application submission date:  
\_\_\_\_/\_\_\_\_/\_\_\_\_

6. Receive Offer Letters, Confirmation of Enrolments (CoEs) and Confirmation of Appropriate Accommodation and Welfare (CAAW) letter from MEGA and Primary / High School

• • •

☐ Offer Letters  
☐ Confirmation of Enrolments  
☐ CAAW letter

7. Apply for a student visa

• • •

Student Visa Application Date:  
\_\_\_\_/\_\_\_\_/\_\_\_\_

8. Update MEGA of your arrival date

• • •

Arrival Date: \_\_\_\_/\_\_\_\_/\_\_\_\_

☐ Airport pickup booked  
☐ Homestay details  
☐ Overseas Student Health Cover (OSHC) details  
☐ Guardian details  
☐ MEGA details  
☐ School details

9. Read our Pre-Arrival Guide

10. Arrive in Sydney and start your study journey

• • •

☐ Yes

# Student Visa Application Checklist



Student applies for homestay & guardianship  
homestay arrangement



Confirmation of welfare arrangement for homestay & guardianship



Receive Confirmation of Enrolment (CoEs) and Confirmation of Appropriate  
Accommodation and Welfare (CAAW) letters from MEGA & Primary / High School



Lodge student visa application  
(and guardianship visa if parents are accompanying)



Arrive in Sydney, Australia



Introduce homestay parents & guardian to student



Orientation at MEGA & Primary / High School



Commence study



## Find us!



mega.edu.au



mega.sydney



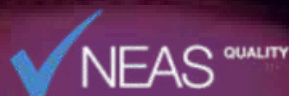
@mega.syd

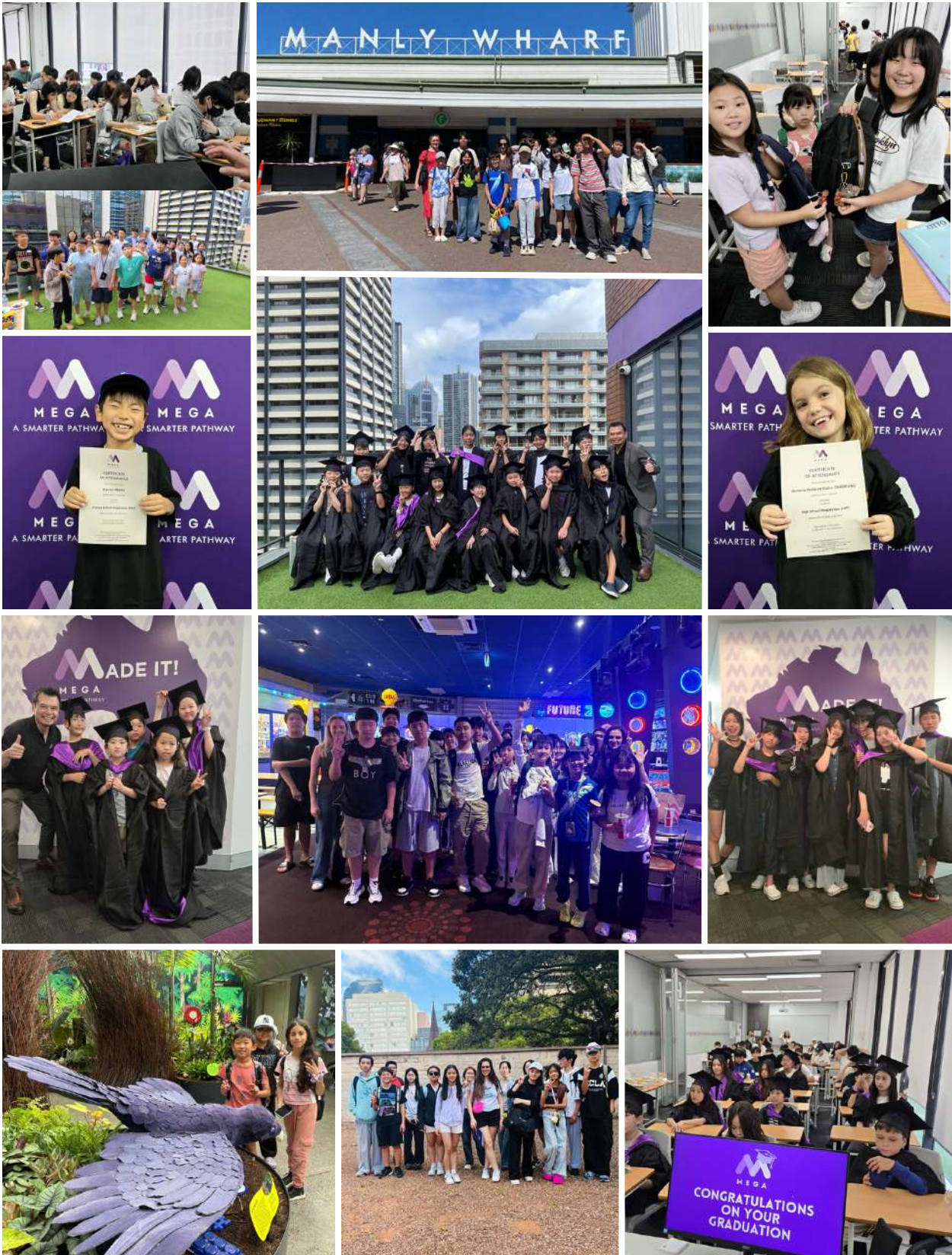


@MEGA Pathways



linkedin.com/company/mega-sydney











**Learn a smarter way  
and get in touch today!**



**MEGA Sydney Head Office**  
Level 9, 225 Clarence Street  
Sydney NSW 2000 Australia

Tel: +61 2 9299 6788  
[info@mega.edu.au](mailto:info@mega.edu.au)

**[www.mega.edu.au](http://www.mega.edu.au)**

Macquarie Education Group Australia Pty Ltd  
trading as MEGA Education  
ABN 23 11 742 155 RTO Code 91305  
CRICOS Provider Code 02657J